

Thin Set Installation into Recessed area (Thin set)

SureDome's successful cementitious formula provides a secure bond when installed with a thin set epoxy.

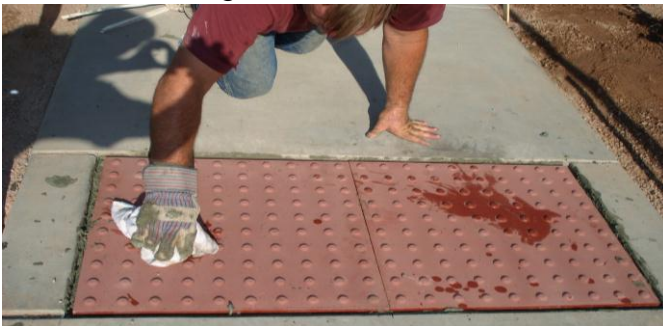
- 1) Area should be recessed the depth of the SureDome tile and the bonding material required.
- 2) Apply bonding material to the bed of the area to be installed. Use an approved bonding material.



- 3) Brush the back of tile with a wet brush. Apply bonding material to back of tile.



- 4) Set the tile firmly with a good twisting motion. Base of tile must be flush with the surrounding concrete, and each tile should press directly against the adjacent tile. No space between tiles is required. With a beating block, tap tiles into place so the tiles line up with each other and the height of the sidewalk.



- 5) Clean off the surface with a sponge and fresh water.



- 6) Fill any gap between tile and concrete with a silicone sealer.

