

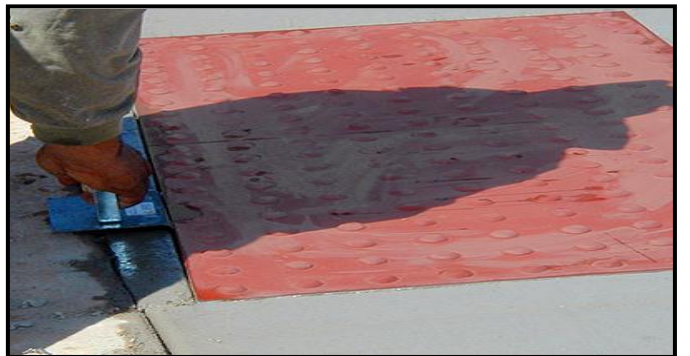
Installation into Fresh Concrete (wetset)

SureDome's successful cementitious formula provides a secure bond to the wet concrete during this installation.

- 1) Determine layout of SureDome[®] Tiles. Pre cut any tiles if needed, and trim partial domes flat.
- 2) Pour Concrete and finish to proper grade. Use a flat bladed shovel to remove 1/2" of concrete from the area to be installed. Use a wood float to smooth the area.
- 3) Brush the back of tile with a wet brush. Immediately turn tile over and press into fresh concrete. Repeat with each tile.
- 4) Base of tile must be flush with the surrounding concrete, and each tile should press directly against the adjacent tile. No space between tiles is required. By pressing down with hands on tile, adjust tiles to match the slope of the surrounding concrete.



- 5) Finish the set tiles. Clean any excess from between tiles with a margin trowel, and trim around the tiles with an 1/8" radius edger.



- 6) Clean any residue off the tiles with a sponge and fresh water.

